

**COLOUR PALETTE**

**TYPOGRAPHY**

Lato Light  
Lato Italic  
Lato Regular  
Lato Black

ABCDEFGHIJKLMNOPQRSTUVWXYZ  
ABCDEFGHIJKLMNOPQRSTUVWXYZ  
abcdefghijklmnopqrstuvwxyz  
abcdefghijklmnopqrstuvwxyz

0123456789  
0123456789  
0123456789

**THE ART OF LAW**

The practice of law is a profession, and like any profession, there are times when it is elevated to the level of art.

**COLOUR PALETTE**

**TYPOGRAPHY**

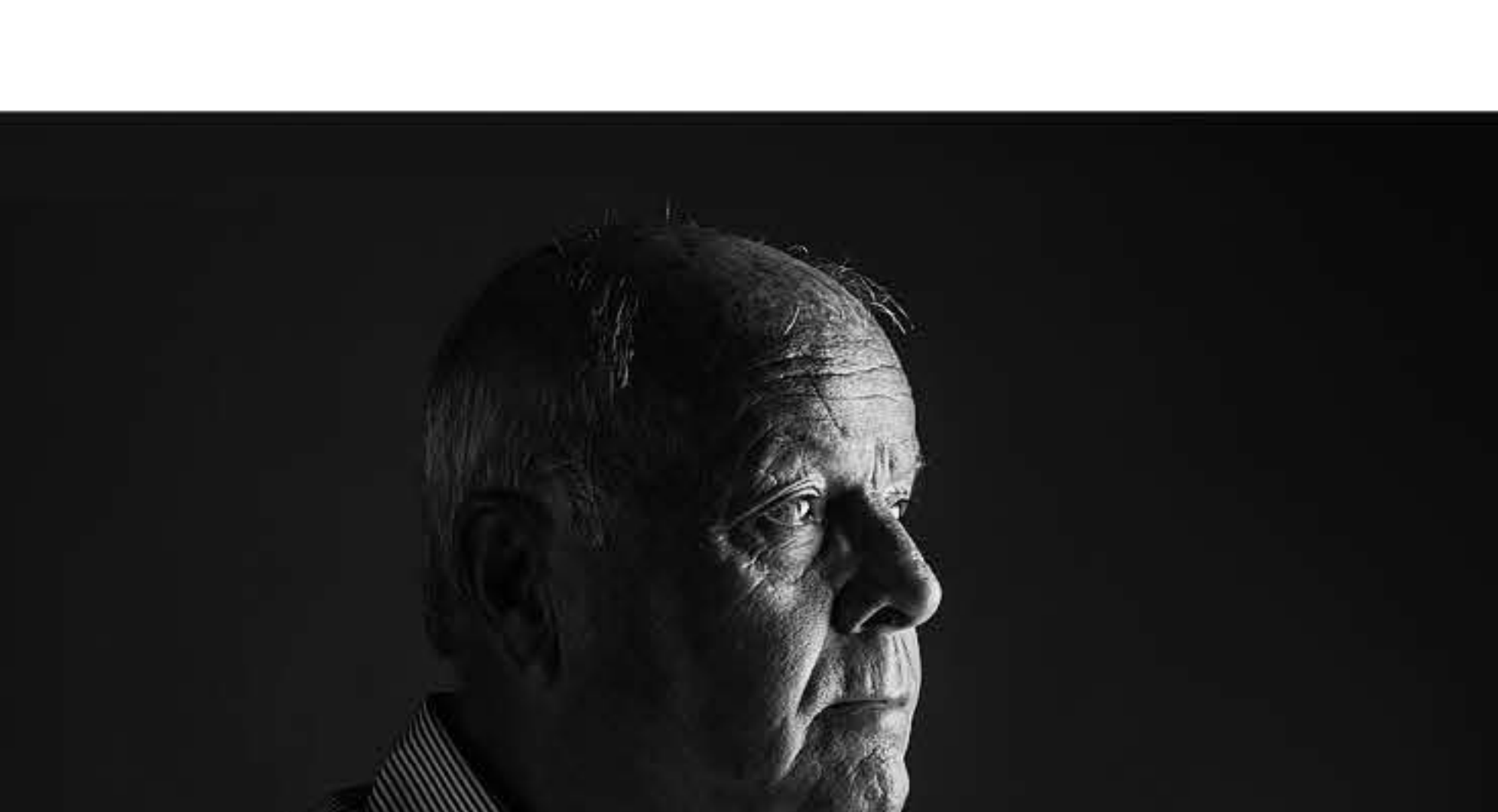
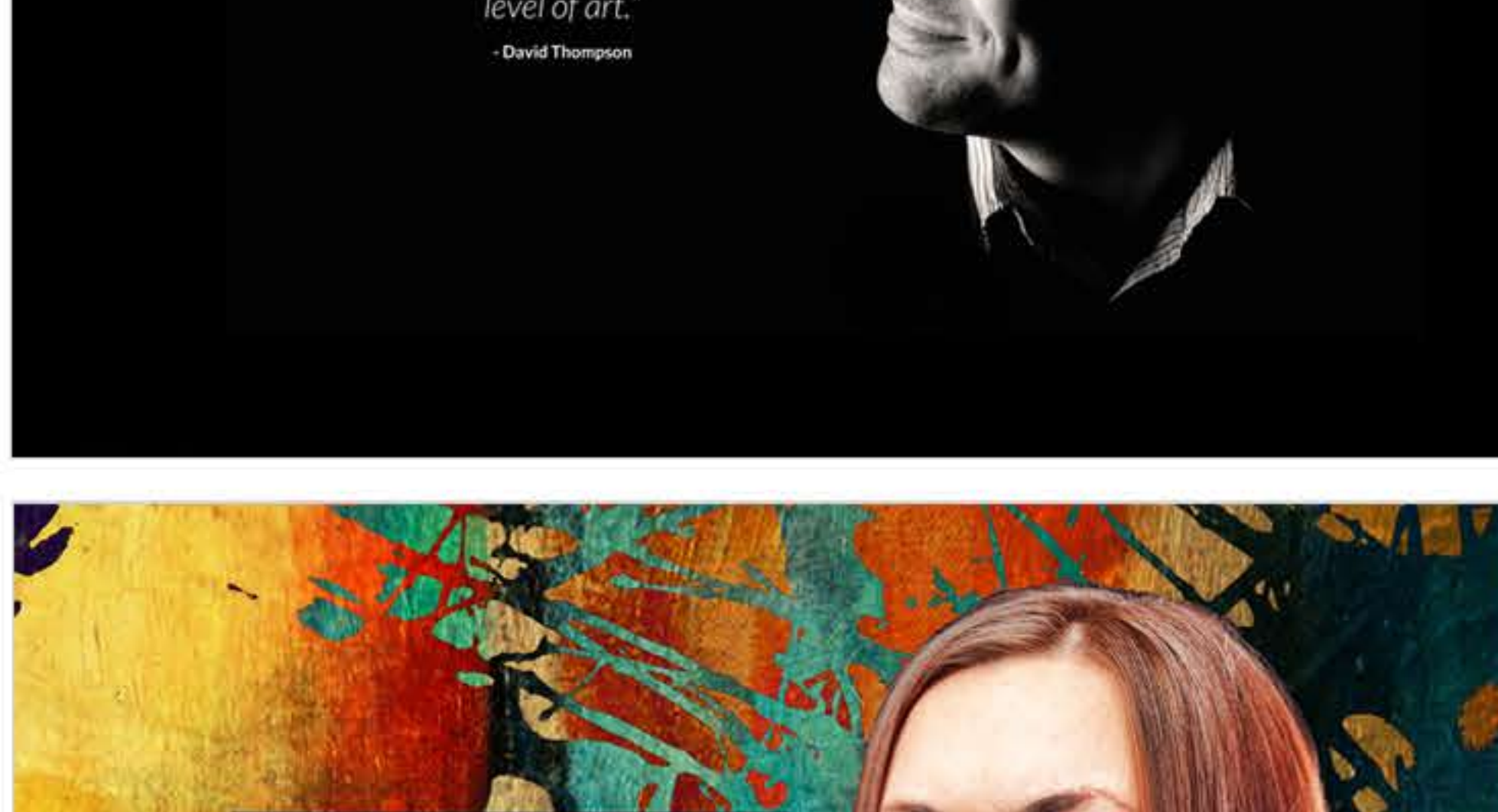
Lato Light  
Lato Italic  
Lato Regular  
Lato Black

ABCDEFGHIJKLMNOPQRSTUVWXYZ  
ABCDEFGHIJKLMNOPQRSTUVWXYZ  
abcdefghijklmnopqrstuvwxyz  
abcdefghijklmnopqrstuvwxyz

0123456789  
0123456789  
0123456789

**CAREER IN VIEW**

You and make interesting mistakes, make amazing mistakes, make glorious and unapologetic mistakes. Break rules. Cause the world more interesting for your being here. Make Good Art. -Neil Gaiman



JAMES W. MAHLER

*"When we talk about the art of law, we're really talking about excellence. It's elevating the practice of law to an art form. That's what makes us stand apart."*

-Jim Mahler

**JAMES W. MAHLER**  
MANAGING PARTNER

Whether your deal is closing in a week or is part of a lengthy transaction that's been going on for a year, you can count on Jim Mahler's experienced oversight, impeccable organizational skills and can-do attitude to protect your interests and help you achieve your goals.

**CONNECT**

EMAIL: JMAHLER@SHAWKINS.COM  
PHONE: (905) 525-5826

**EDUCATION:** McMaster University, B.Com. & Arts (Hons.), 1991; University of Toronto, M.B.A., LL.B., 1995

**MEMBERSHIPS:** Canadian Bar Association, Law Society of Upper Canada, Hamilton Law Association

**COMMUNITY INVOLVEMENT:** Member of Hamilton Tiger-Cats, Tiger-Town Council, past executive member of Ancaster Little League, past executive member of Ancaster Minor Hockey League Rep Hockey.

**AREAS OF PRACTICE**

Banking and Securities  
Commercial and Development Real Estate  
Construction Law  
Corporate and Commercial Law  
Estate-Planning  
Insolvency and Corporate Restructuring  
Mergers and Acquisitions  
Municipal and Planning Law  
Residential Real Estate

**A collaborative approach that wins them over.**

For Jim Mahler, the reward of the job comes from taking good care of his clients, many of whom he counts among his friends. When Friday afternoon rolls around and there's been a new development in a deal, Jim's the first one to email back with a quick, "write on it," and "sorry your weekend." Or, even better, "see you on the golf course."

As part of the corporate and commercial team at Scarfone Hawkins, Jim acts for brokers, landlords, developers, builders, manufacturers, distributors, professional service providers, and small business people. His bring-it team-oriented style to every file, from mergers and acquisitions to estates and reorganizations.

The priority Jim places on interpersonal relationships becomes a competitive advantage for his clients.

He may seem quiet at first. But meet Jim, he's listening—and putting together a winning strategy based on years of experience. After all, as Jim puts it, "I'd never go into a meeting like a pig butt. It's better to help the other side see it my way than tell them, 'This is the way it is.'"

**Artistic style that best represents your approach to law.**

A: "My favourite art is photography. I'm a very concrete, practical person. A realist."

Students: Paint your career path at Scarfone Hawkins [LEARN MORE](#)